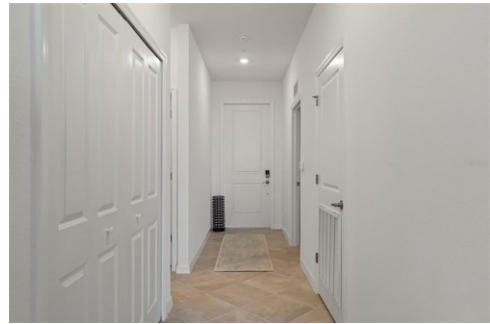
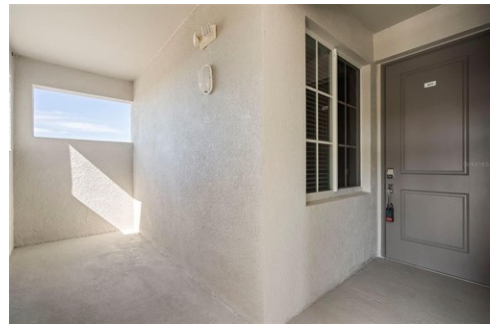




\$ 359,900



12320 Wellen Golf St Unit 401, Venice, FL 34293

- » Beds: 2 | Baths: 2 Full
- » MLS #: A4638367
- » Condominium | 1,149 ft²
- » More Info: 12320WellenGolfSt401.IsForSale.com



Ashlee Coffey
423.215.1486
ashleecoffey@michaelsaunders.com
<http://ashleecoffey.michaelsaunders.com/>

Sales Office
490 Rockley Blvd
Venice, FL 34293
(941) 485-5421

Remarks

Look no further for the perfect Florida getaway, located in Wellen Park Golf and Country Club, nestled within the highly sought after Wellen Park community. Enjoy the expansive views of the private golf course from this brand new 2 bed/2 bed condo that includes 2 deeded golf memberships, transferable to guests/renters for a fee, making this a desirable rental income property. This top floor unit has an elevator for easy living and a large storage unit across the hall for added convenience to store overflow, bikes, kayaks, beach equipment or anything else that will enhance your Florida experience. Multiple beaches are within a short driving distance including the award-winning Siesta Key Beach of Sarasota! Inside this beautiful unit you will find updated features including quartz countertops, stainless steel appliances, tile throughout, washer and dryer and neutral decor to easily add your own personal design touches. This condo is conveniently located near the vast amenities offered in the community including a Tiki bar, resort style pools, tennis and pickleball courts, dog park as well as a fully equipped fitness center. The up-and-coming club house will feature a full-service restaurant, day spa and more. This 18-hole course, pro-shop and practice facilities will be ideal for the golfer.

